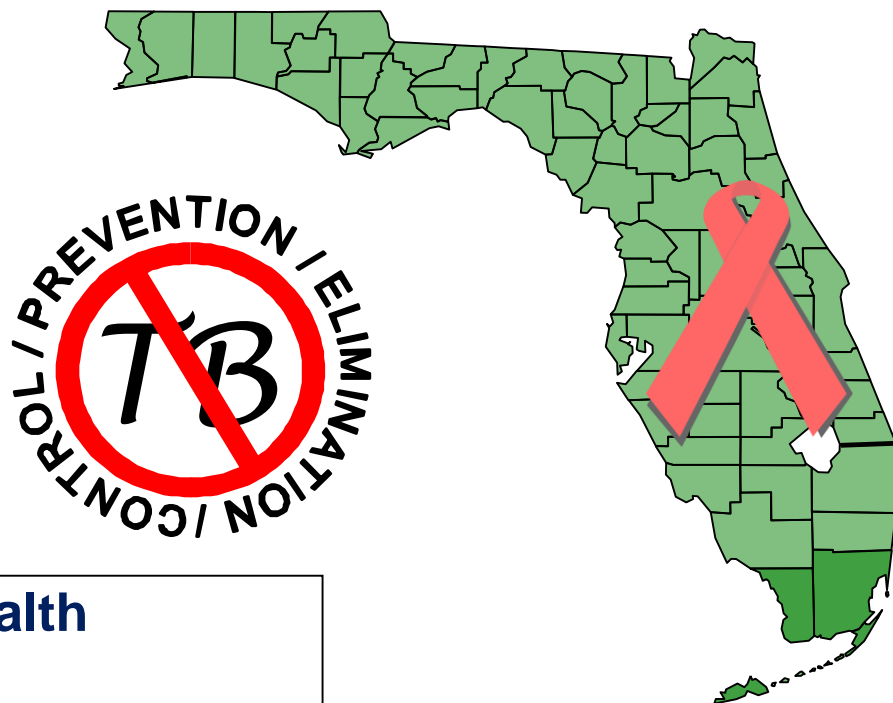


# AIDS Cases with Tuberculosis – Florida, 2014



**Florida Department of Health**  
**HIV/AIDS Section**  
**Division of Disease Control and Health Protection**  
Annual data as of 12/31/2014

Created: 09/25/15  
Revision: 01/26/16

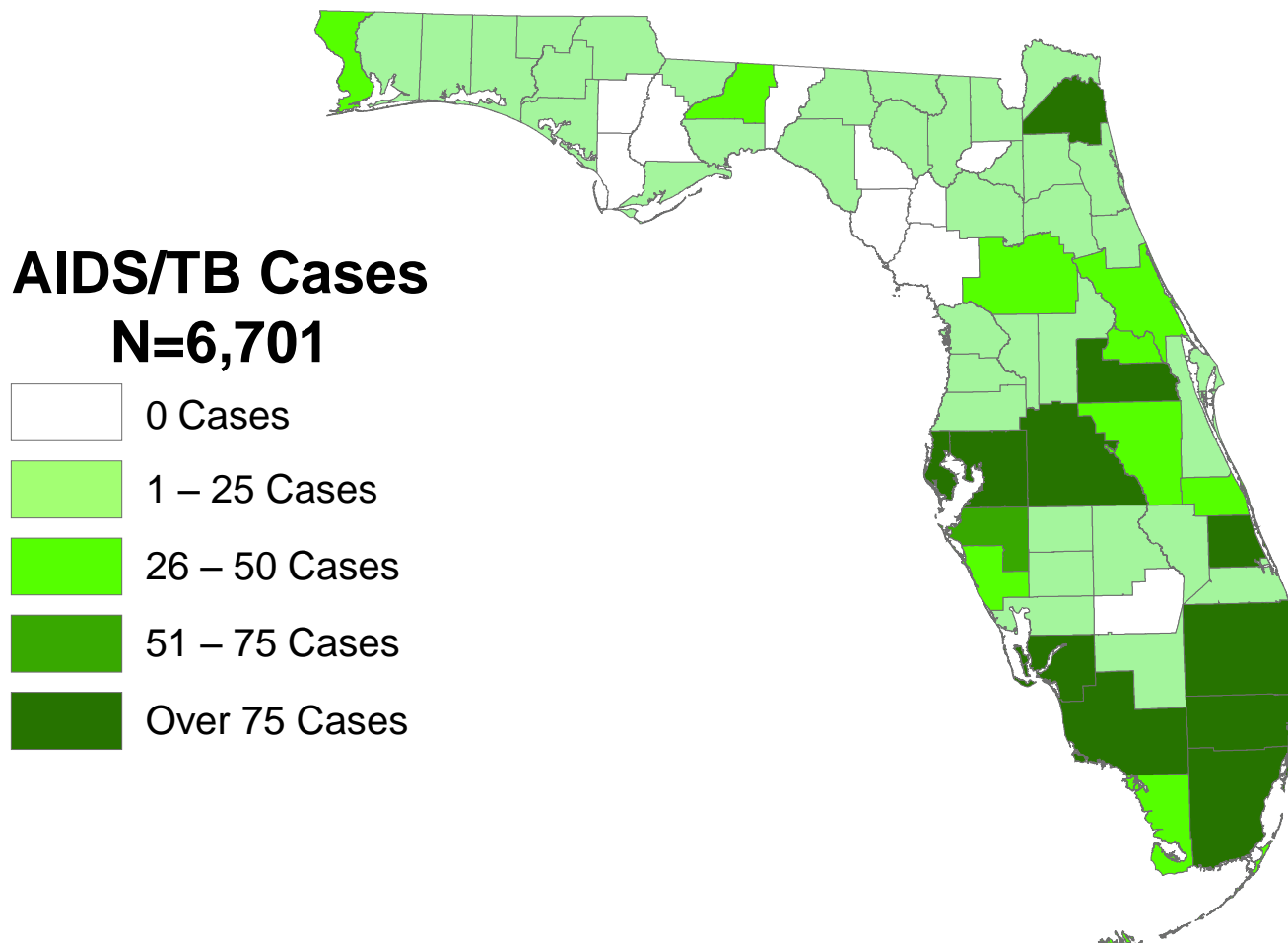


***The following data is provided from  
HIV/AIDS Section  
Surveillance Unit  
Division of Disease Control and Health Protection***

# HIV and AIDS Case Data

- Ⓡ Adult cases represent ages 13 and older, pediatric cases are those under the age of 13. For data by year, the age is by age of diagnosis. For living data, the age is by current age at the end of the most recent calendar year, regardless of age at diagnosis.**
- Ⓡ Unless otherwise noted, whites are non-Hispanic and blacks are non-Hispanic.**
- Ⓡ Total statewide data will include Department of Correction Cases (DOC) unless otherwise noted. County data will exclude DOC cases.**
- Ⓡ HIV prevalence data are generated later in the year, usually in May, when most of the “expected” death data are complete.**

# AIDS Cases with TB, by County of Residence,\* Reported through 2014, Florida

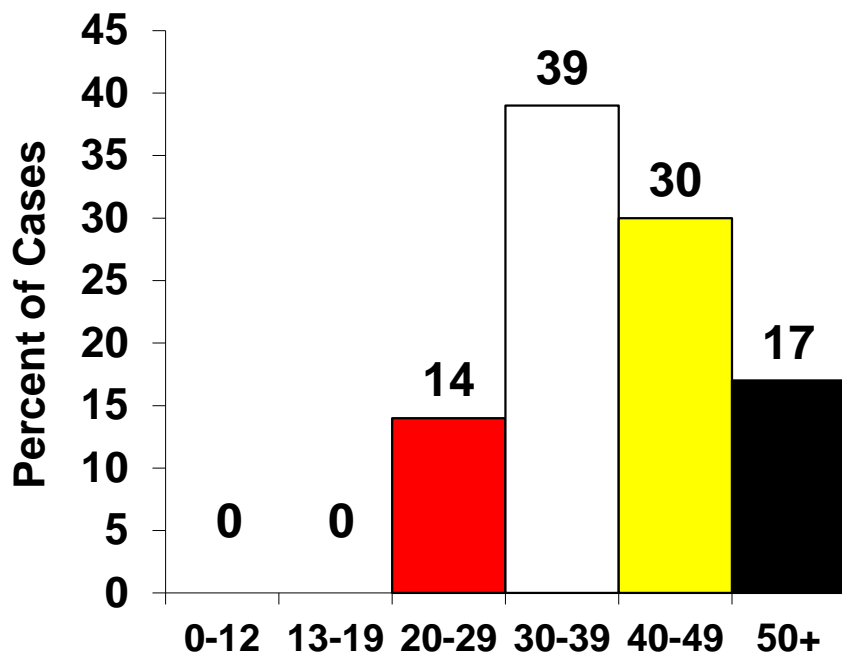


The majority of AIDS/TB cases (40%) were from Miami-Dade (N=2,693), Broward (N=845), Palm Beach (N=775) and Orange (N=454) counties.

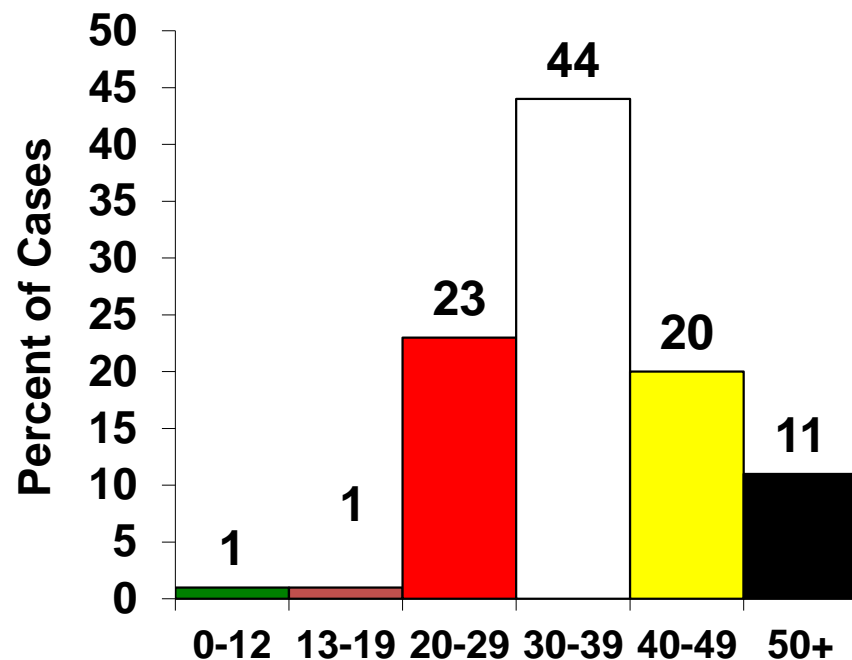
\*County totals exclude Department of Corrections cases (N=229).

# AIDS Cases with TB By Sex and Age Group Reported through 2014, Florida

**Males**  
N=5,118



**Females**  
N=1,809

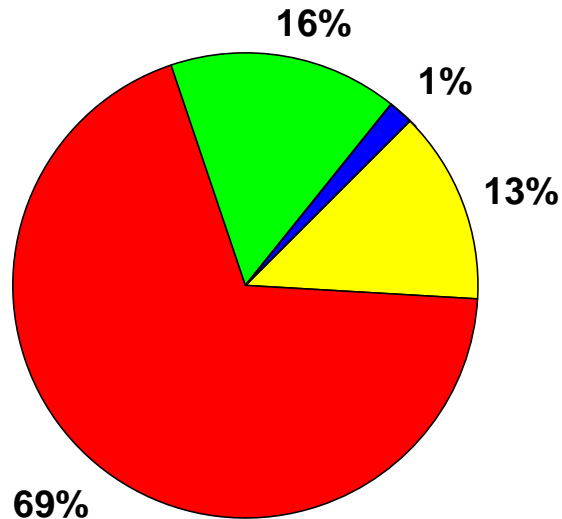


Note: Female AIDS/TB cases are diagnosed at an earlier age than males, where 25% were diagnosed under the age of 29, compared to only 14% for males.

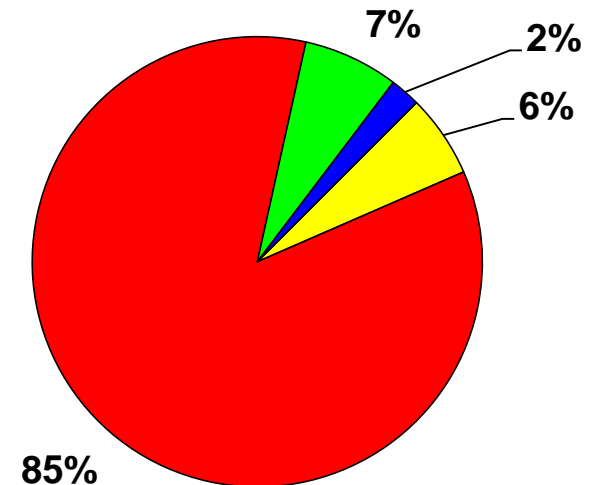


# Adult AIDS Cases with TB By Sex and Race/Ethnicity Reported through 2014, Florida

**Males**  
**N=5,102**



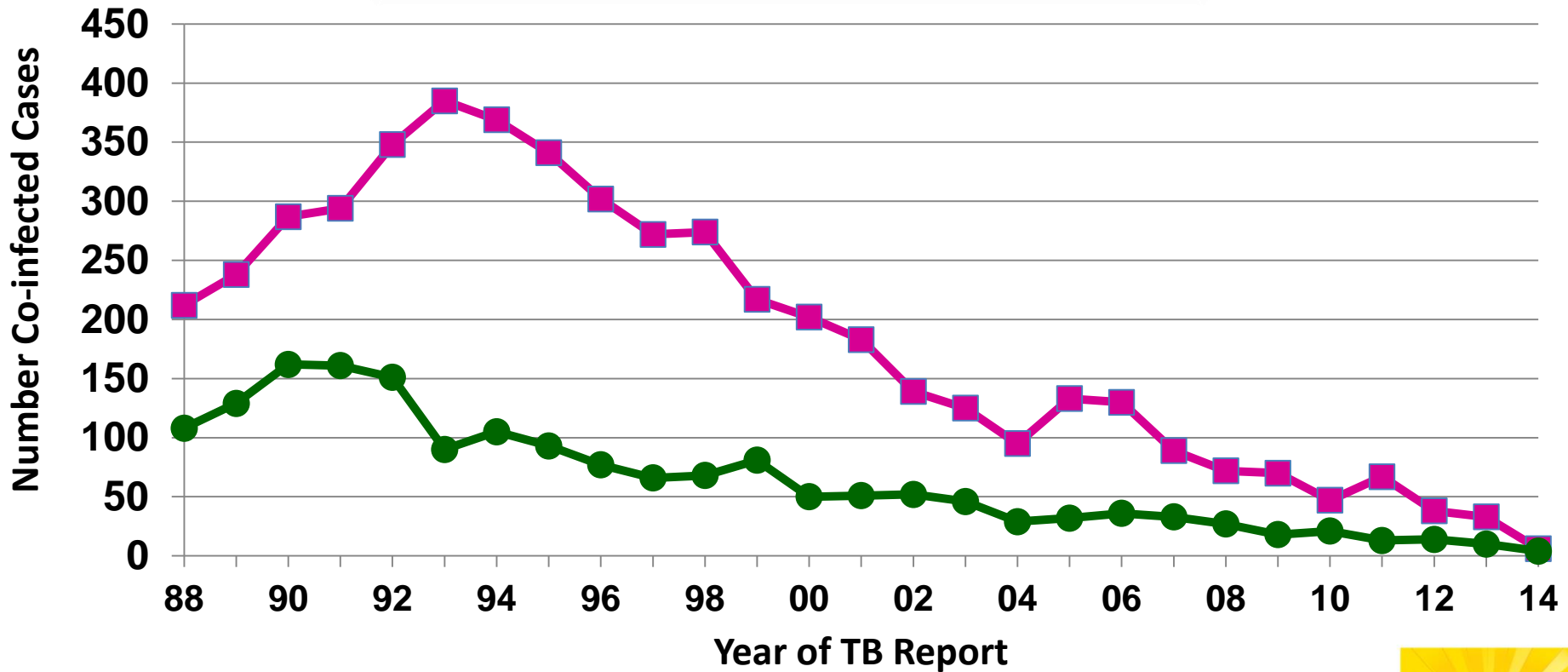
**Females**  
**N=1,794**



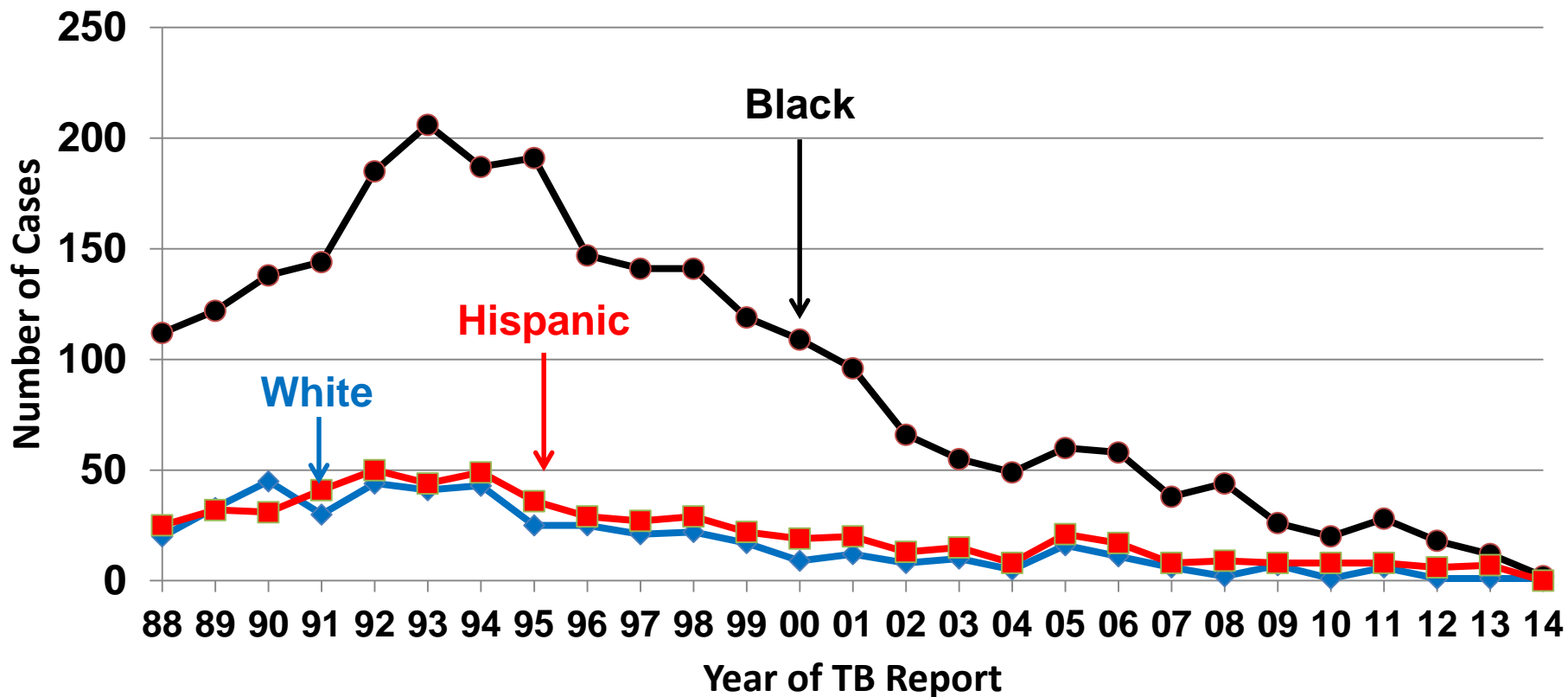
**Note:** Among male AIDS/TB cases, 69% are black, 13% are white and 16% are Hispanic. Among female AIDS/TB cases, 85% are black, 6% are white and 7% are Hispanic.  
**\*Other includes Asian/Pacific Islanders and Native Alaskans/American Indians.**

# AIDS Cases with TB By Type and Year of TB Report, 1988-2014, Florida

■ Pulmonary TB    ● Extra-pulmonary TB

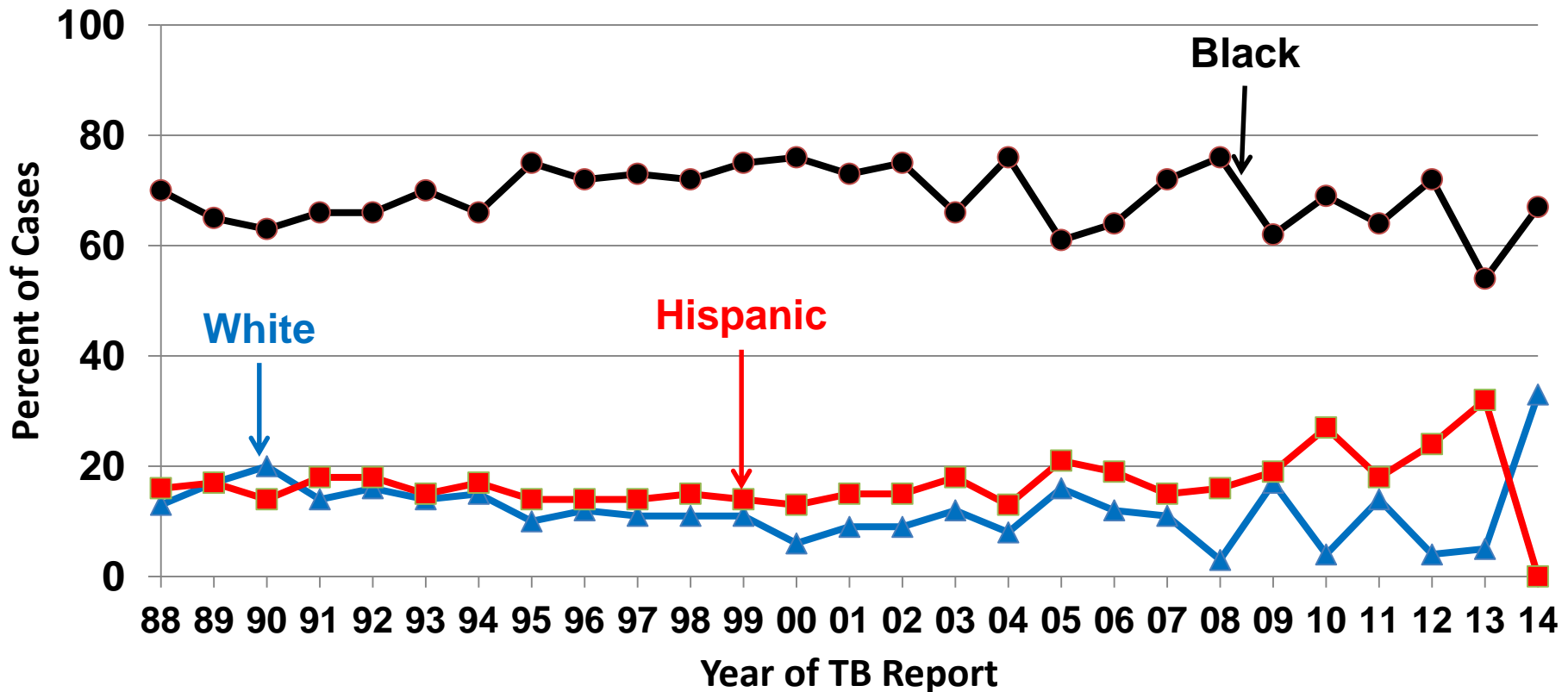


# Adult Male AIDS Cases with Pulmonary TB By Race/Ethnicity and Year of TB Report 1988-2014, Florida





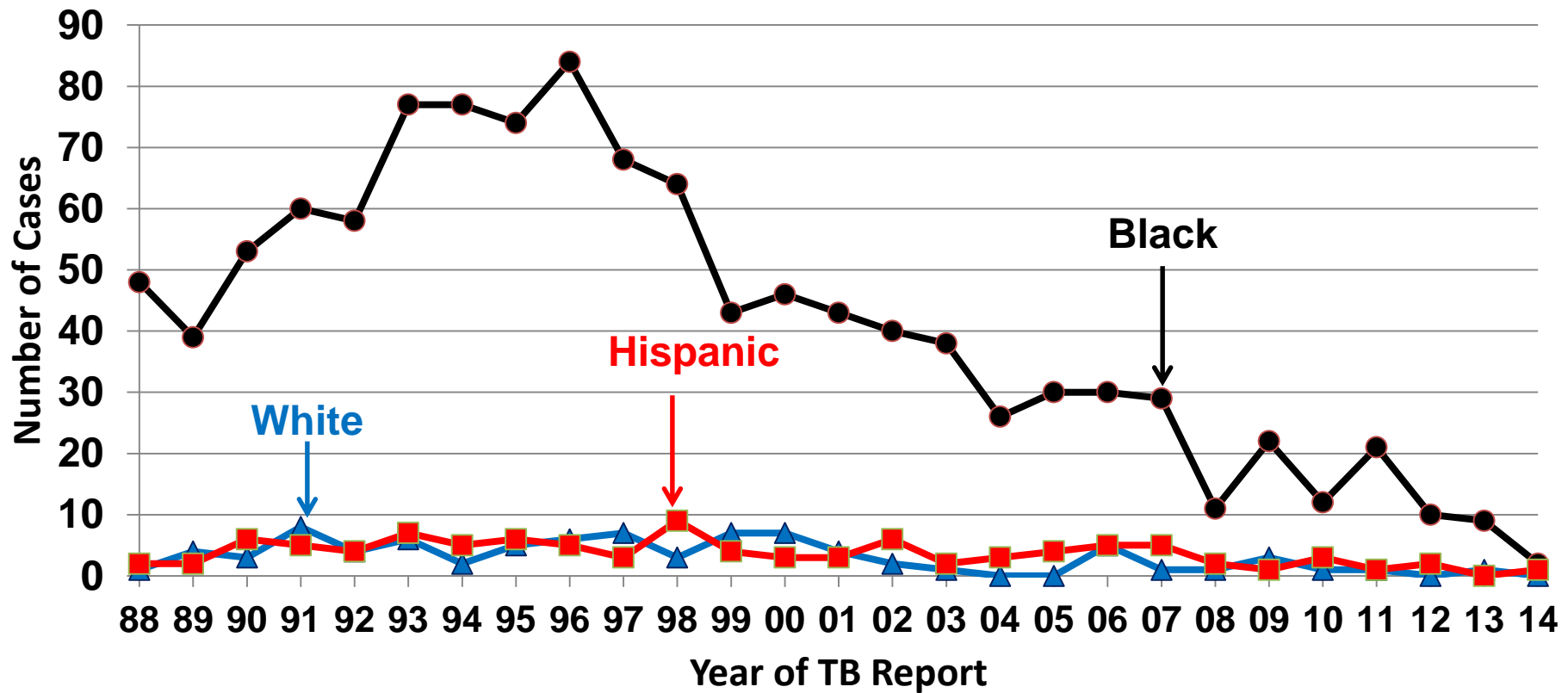
# Percent of Adult Male AIDS Cases with Pulmonary TB By Race/Ethnicity and Year of TB Report 1988-2014, Florida



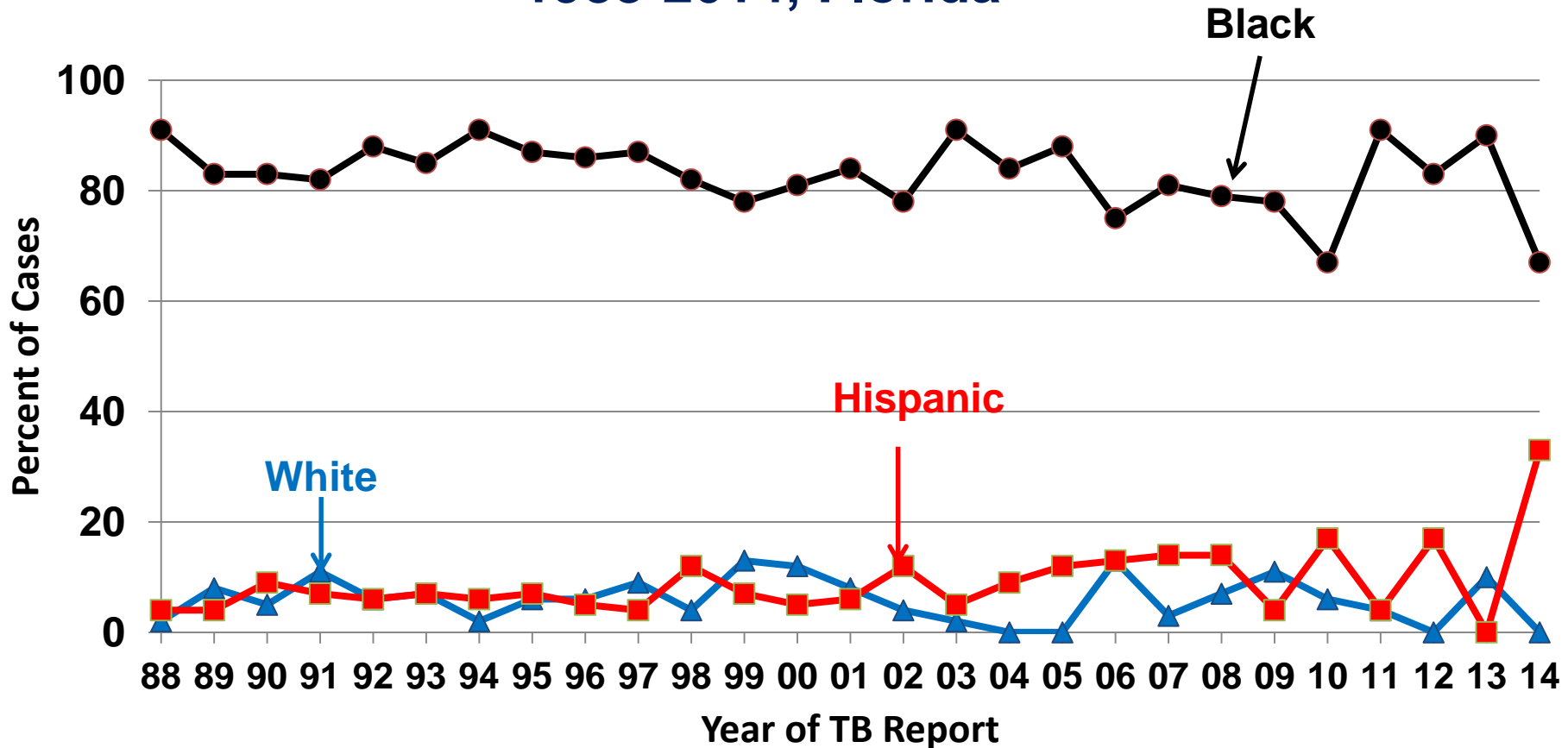
Note: Since 1988, black males accounted for greater than 60% of all AIDS/TB cases among men.



# Adult Female AIDS Cases with Pulmonary TB By Race/Ethnicity and Year of TB Report 1988-2014, Florida



# Percent of Adult Female AIDS Cases with Pulmonary TB By Race/Ethnicity and Year of TB Report 1988-2014, Florida



Note: Since 1988, black females accounted for over 80% of all AIDS/TB cases among women.



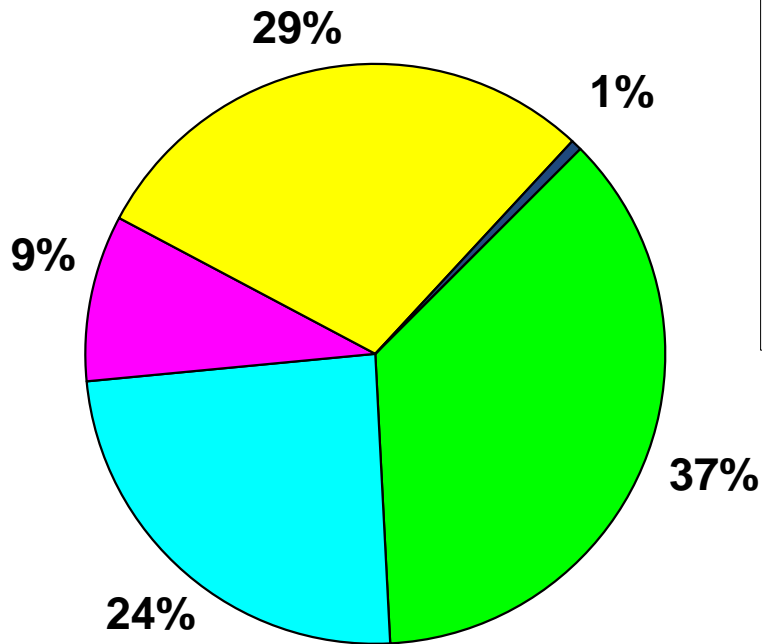
# Definitions of Mode of Exposure Categories

- ◆ **MSM** = Men who have sex with men
- ◆ **IDU** = Injection Drug User
- ◆ **MSM/IDU** = Men who have sex with men & Injection Drug User
- ◆ **Heterosexual** = Heterosexual contact with person with HIV/AIDS or known HIV risk
- ◆ **OTHER** = includes hemophilia, transfusion, perinatal, other pediatric risks and other confirmed risks.
- ◆ **NIR** = Cases reported with No Identified Risk
- ◆ **Redistribution of NIRs** = This illustrates the effect of statistically assigning (redistributing) the NIRs to recognized exposure (risk) categories by applying the proportions of historically reclassified NIRs to the unresolved NIRs.

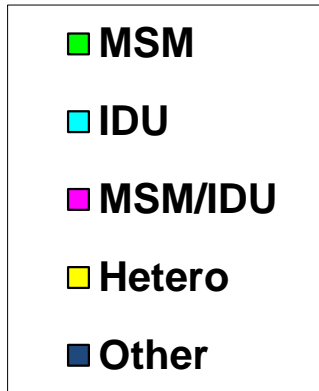
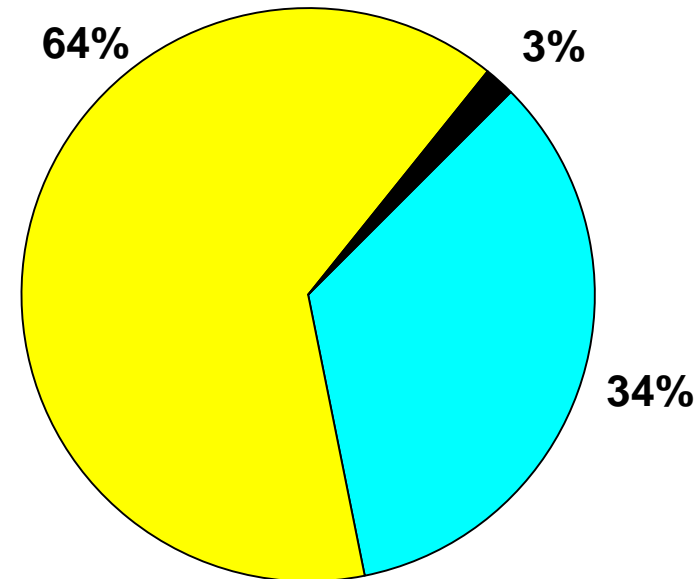


# Adult AIDS Cases with TB By Sex and Exposure Category Reported through 2014, Florida

**Males**  
**N=5,102**

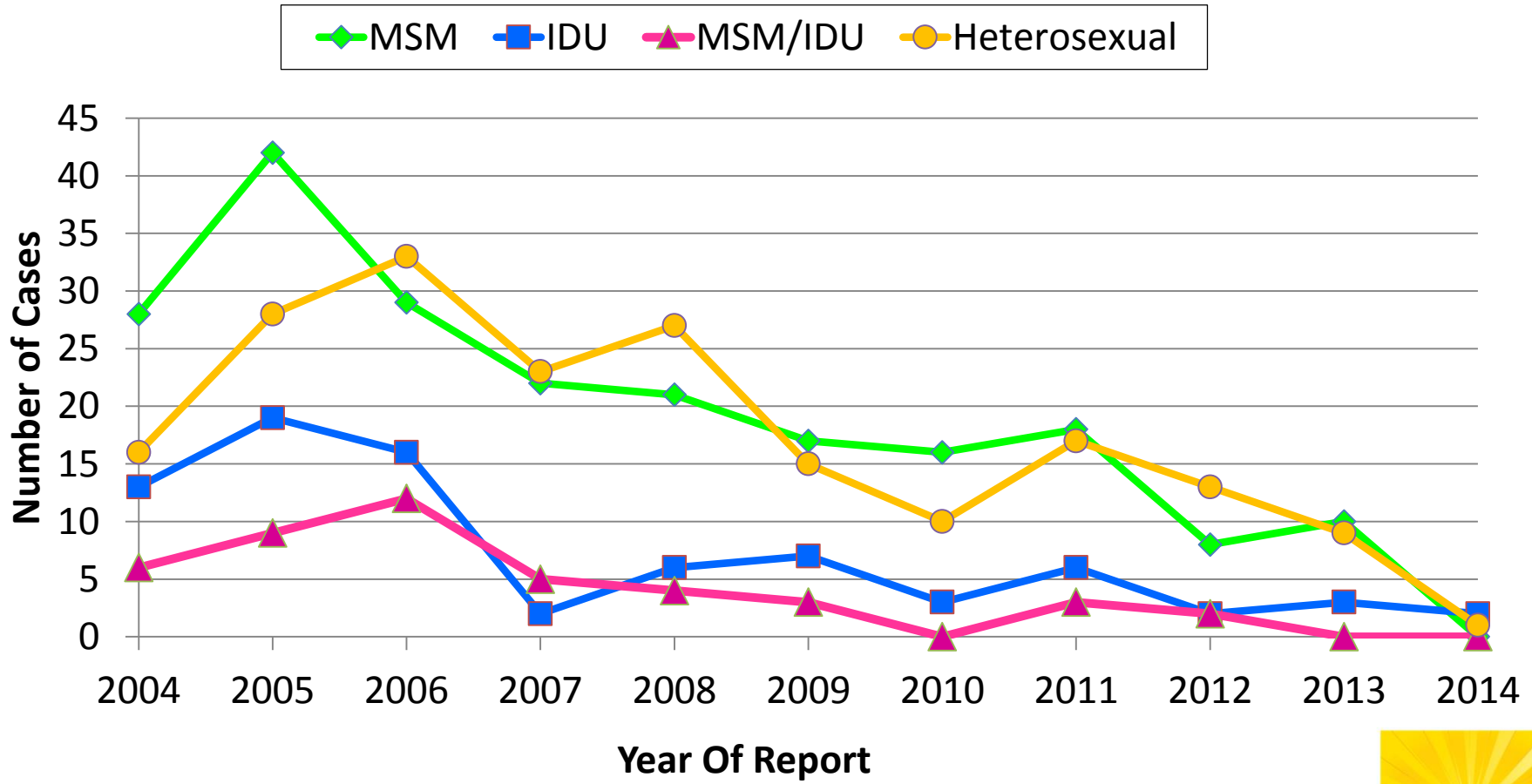


**Females**  
**N=1,794**



Note: Among AIDS/TB cases, 24% of males and 34% of females have a documented IDU-related risk, NIRs redistributed.

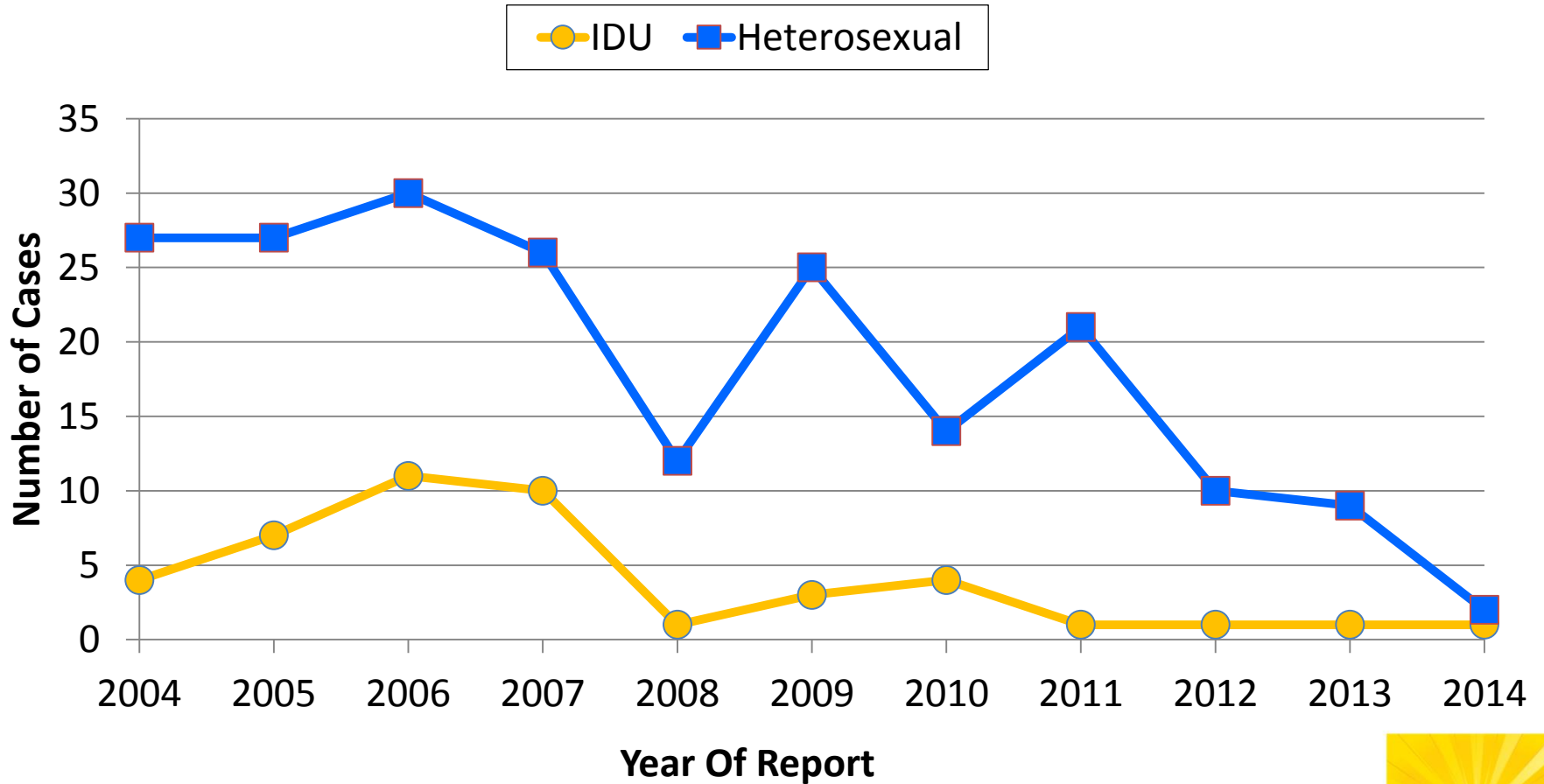
# Adult Male AIDS Cases with Pulmonary TB By Exposure Category and Year of TB Report 2004-2014, Florida



Note: NIRs redistributed. Men who have sex with men (MSM) and heterosexual sex alternated as the primary mode of exposure among male AIDS/TB cases in Florida.



# Adult Female AIDS Cases with Pulmonary TB By Exposure Category and Year of TB Report 2004-2014, Florida



Note: NIRs redistributed. The heterosexual risk continues to be the dominant mode of exposure among females with AIDS/TB.



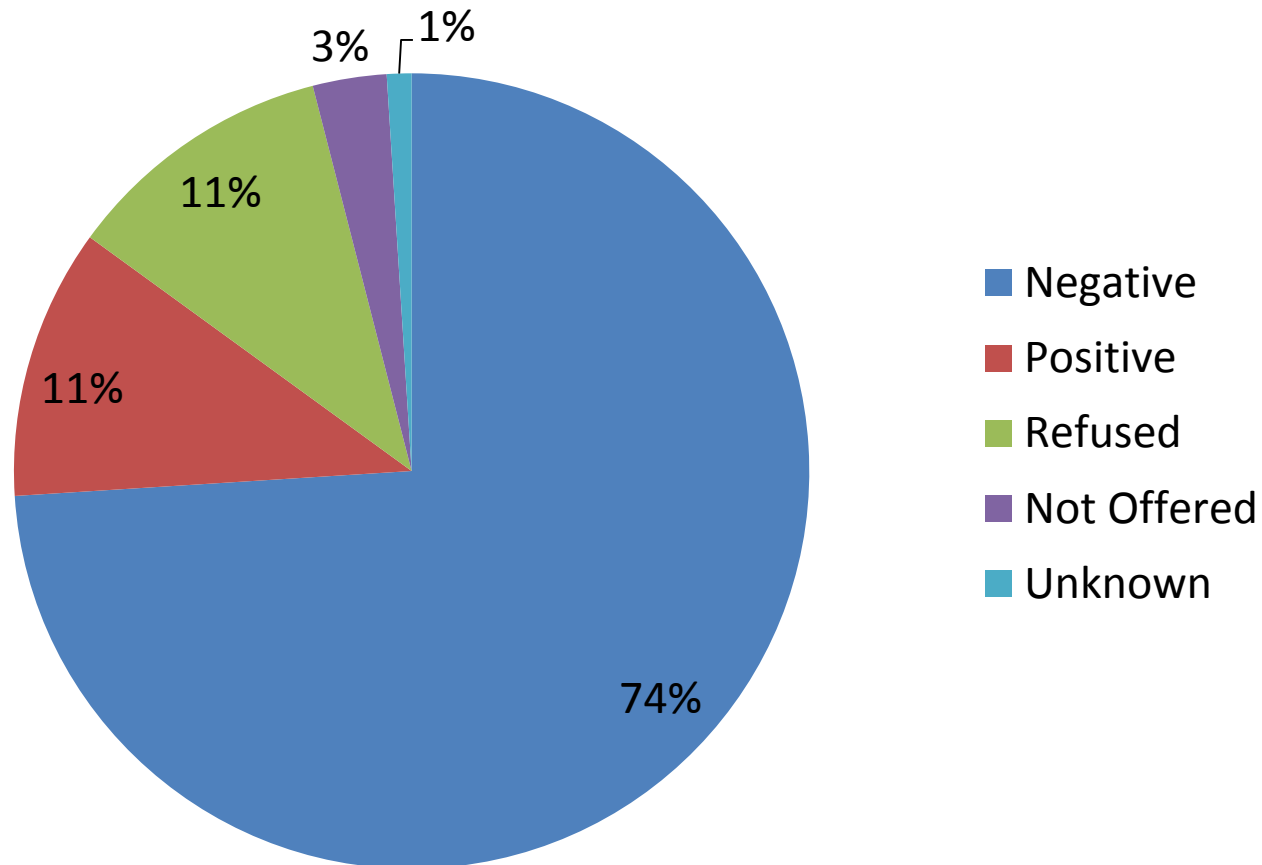
***The following data is provided from***

***Tuberculosis Control Section  
Division of Disease Control and Health Protection  
Florida Department of Health***



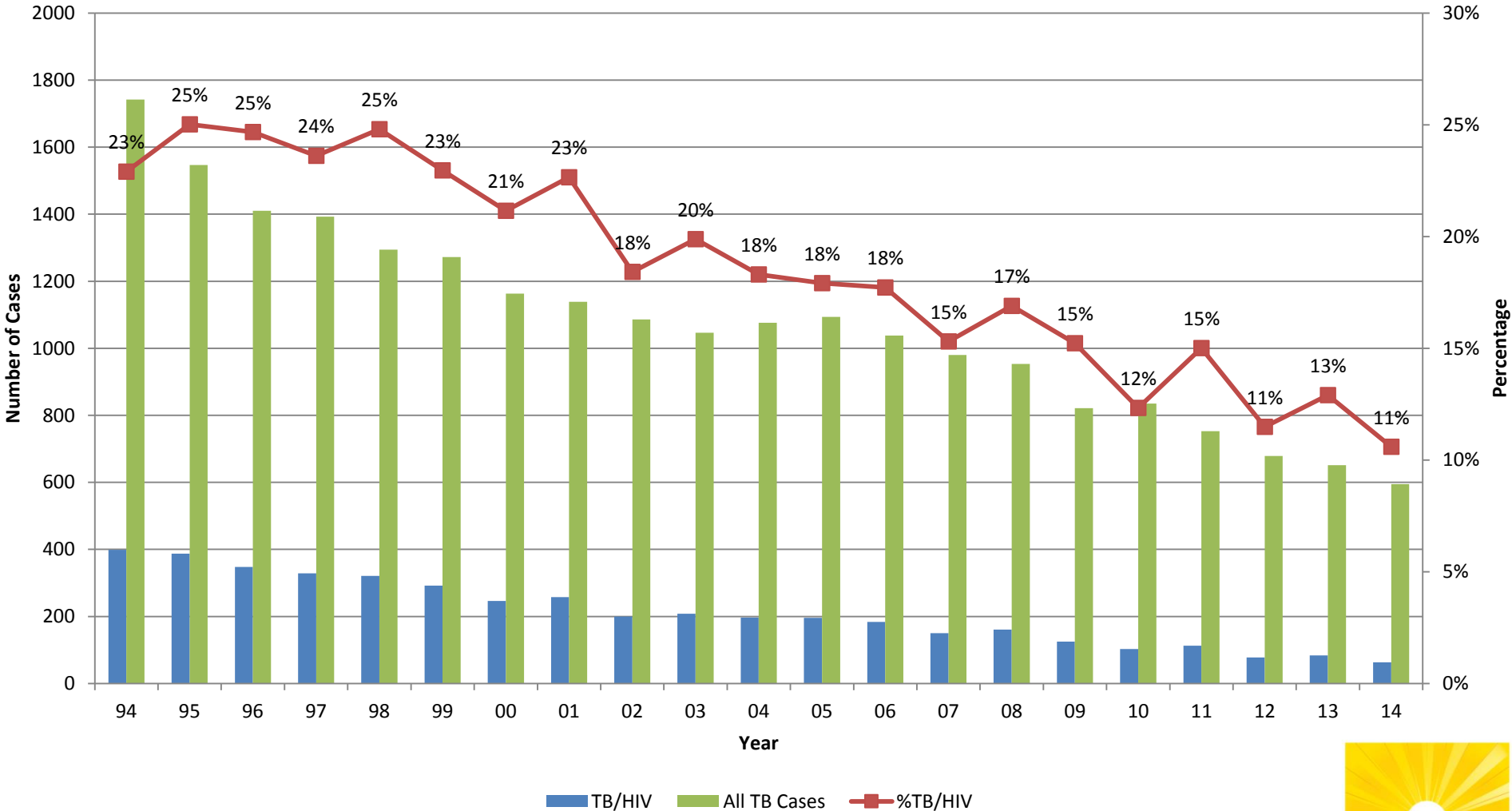


# TB Cases by HIV Test Status Florida, 2014 (N=595)



Source: Health Management System (HMS)  
Data as of 5/4/15

# Tuberculosis/HIV Co-infection Florida, 1994-2014

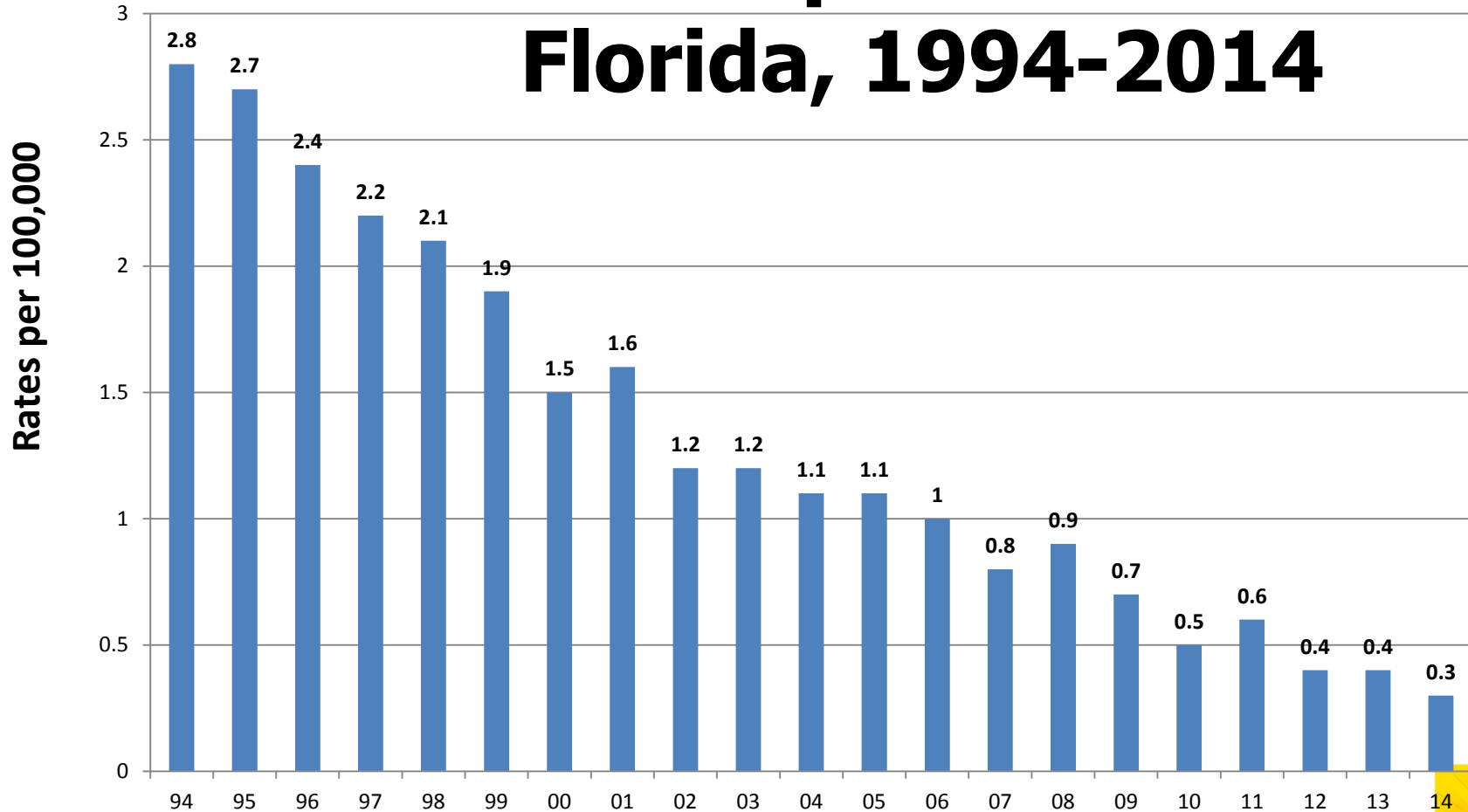


Sources: TB Information Management System (TIMS) (1994-2008)  
and Health Management System(HMS) (2009-2014)

Data as of 7/21/15

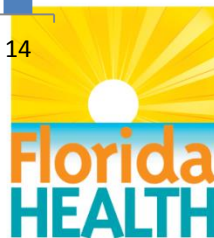


# TB/HIV Rates per 100,000 Population Florida, 1994-2014

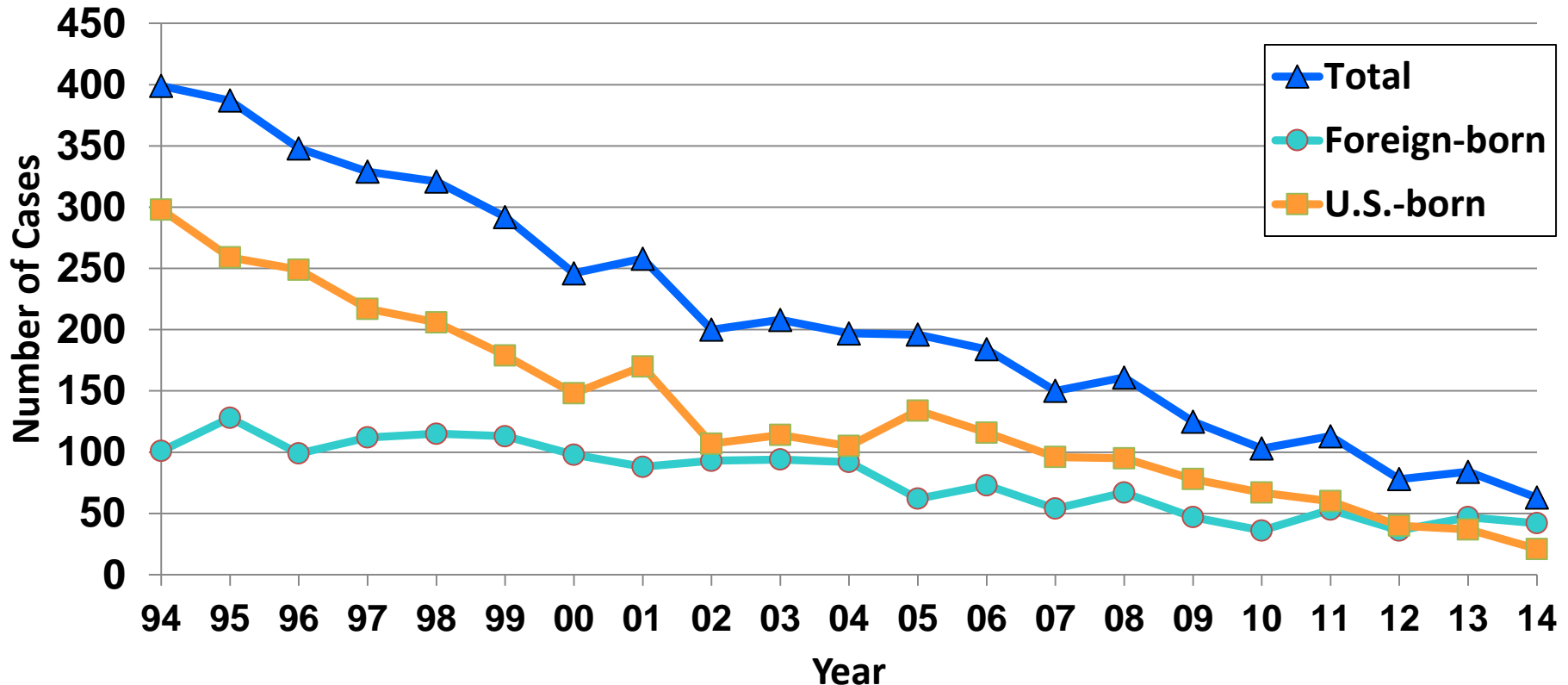


Sources: TB Information Management System (TIMS) (1994-2008) and Health Management System(HMS) (2009-2014)  
Population estimates from Florida Charts

Data as of 7/27/15



# TB/HIV among Foreign-born and U.S.-born, Florida, 1994-2014

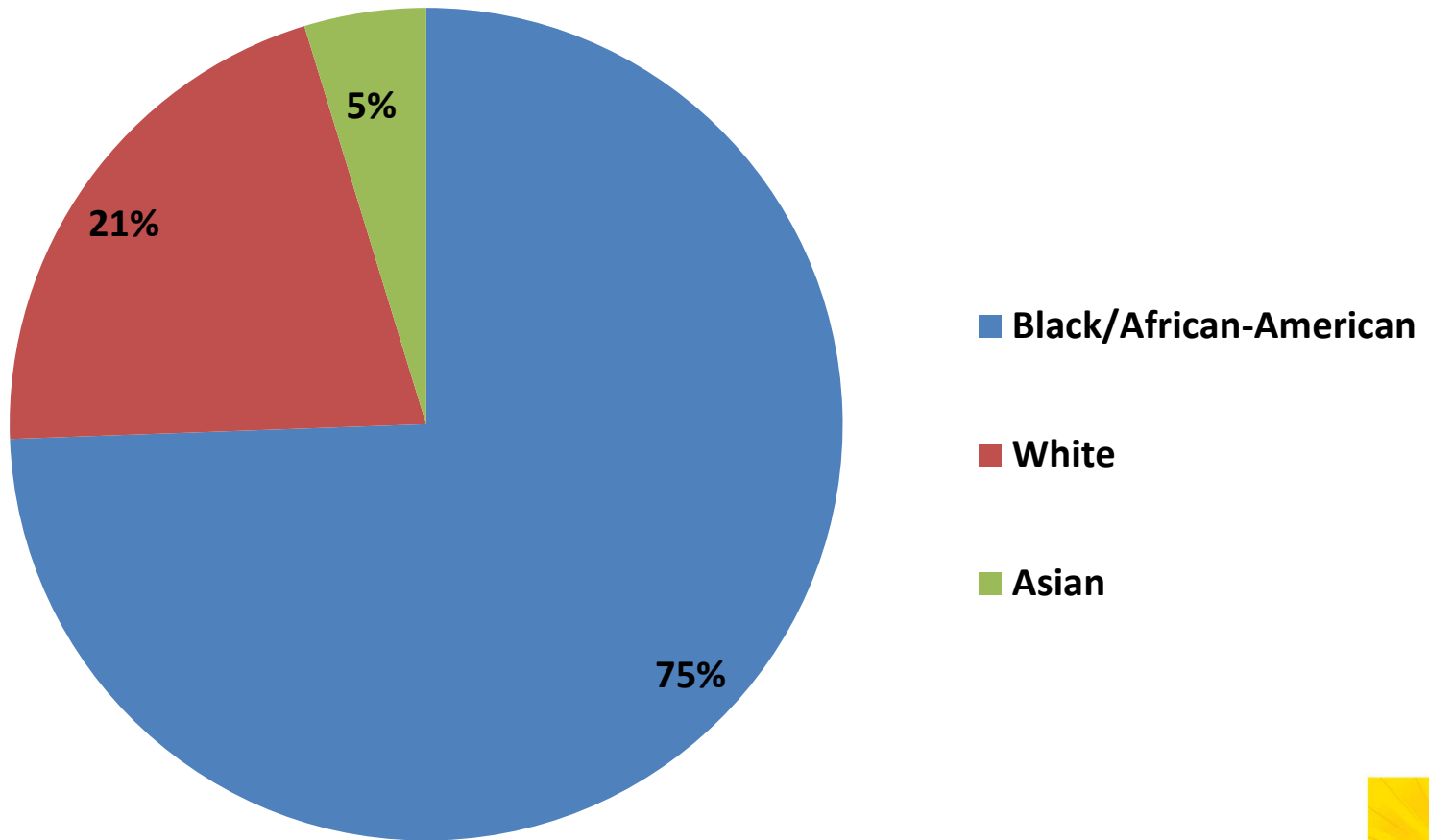


Sources: TB Information Management System (TIMS) (1994-2008) and Health Management System(HMS) (2009-2014)

Data as of 7/15/15



# TB/HIV Cases by Race Florida, 2014 (N=63)

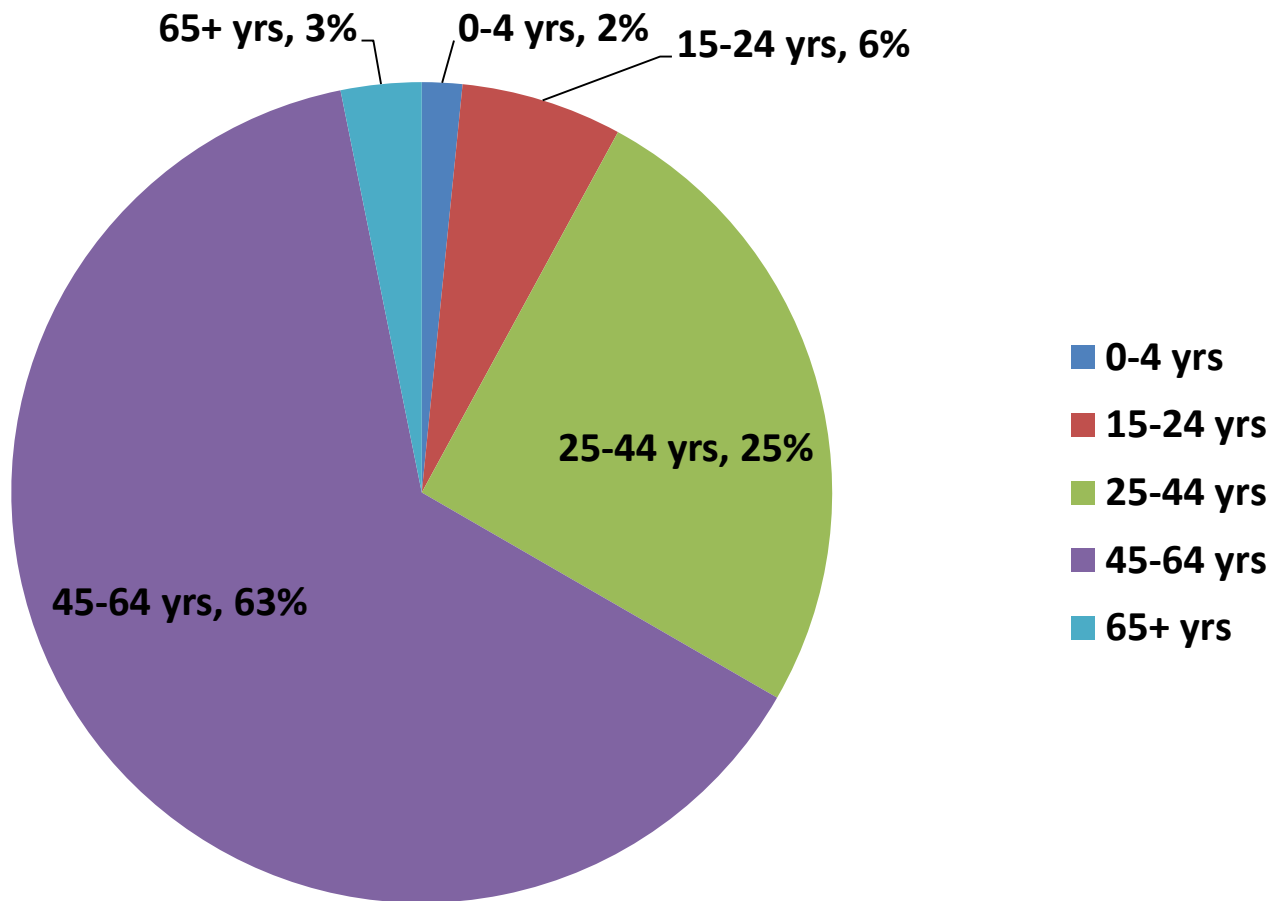


Source: Health Management System (HMS)  
Percentages have been rounded and may not equal 100%

Data as of 7/15/15



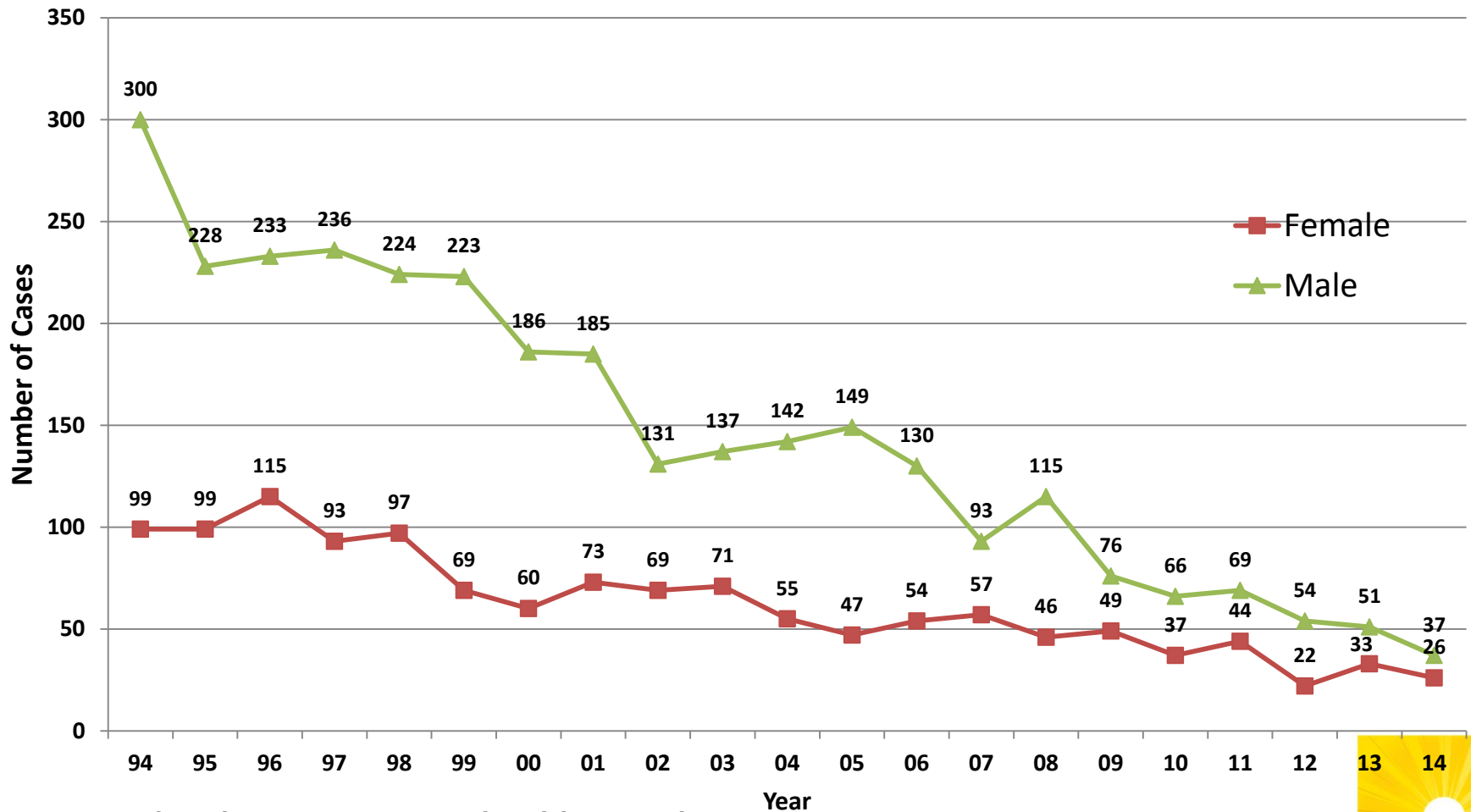
# TB/HIV Cases by Age Florida, 2014 (N=63)



Source: Health Management System (HMS)  
Percentages have been rounded and may not equal 100%  
Data as of 7/21/15



# TB/HIV Cases by Gender Florida, 1994-2014



Sources: TB Information Management System (TIMS) (1994-2008)  
and Health Management System(HMS) (2009-2014)

Data as of 7/28/15





# **For Florida HIV/AIDS Surveillance Data**

**Contact: (850) 245-4444**

**Lorene Maddox, MPH**

**Ext. 2613**

**Tracina Bush, BSW**

**Ext. 2612**

**Madgene Moise, MPH**

**Ext. 2373**

## **For Florida Tuberculosis Surveillance Data**

**Contact: (850) 245-4350**

**Lori Johnston**

**(813) 307-8015 EXT#4771**

**- <http://www.floridahealth.gov/diseases-and-conditions/tuberculosis/index.html>**

**•Visit Florida's internet site for:**

**•Monthly Surveillance Reports**

**•Slide Sets and Fact Sheets**

**•Annual Reports and Epi Profiles**

**<http://www.floridahealth.gov/diseases-and-conditions/aids/surveillance/index.html>**